

Your First Day at College

Where to Go

We have created bubbles and zones within the College to limit movement around the building, and to reduce the number of people you will come into contact with.

On your first day, you will need to go to the correct entrance for your course area. Please see table below and refer to the relevant campus map at the bottom of this document.

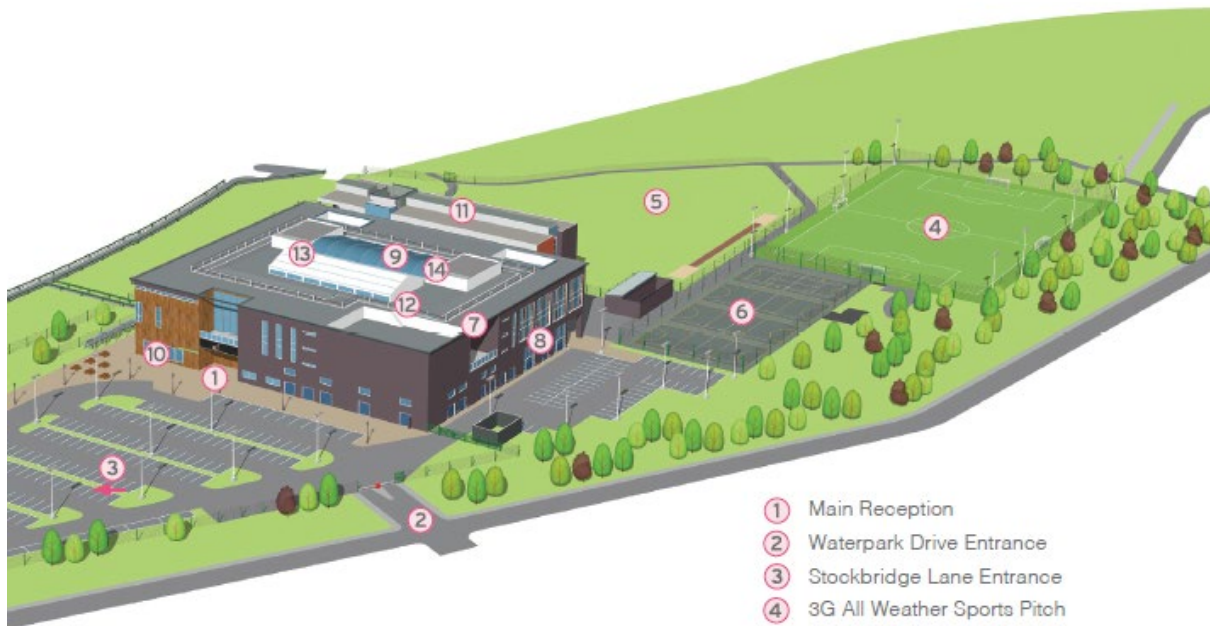
Campus	Course Area	Entrance
Knowsley Community College		
Main Campus Stockbridge Lane, Huyton, L36 3SD	All course areas	All students should enter the campus via the main entrance. See point 1 on Knowsley Main Campus map.
IAMTech Campus Princess Drive, Huyton, L14 9ND	All course areas	All students should enter the campus via the main entrance. See point 1 on IAMTech Campus map.
Campus	Course Area	Entrance
St Helens College		
St Helens Town Centre Campus Water Street, St Helens, WA10 1PP	A levels	Students should access the building via the entrance next to The Atrium. See point 2 on St Helens Town Centre Campus map.
	Art & Design, Graphic Design, Game Art, Media and Photography	Students should access the SmithKline Beecham Building (SKB) entrance. See point 6 on St Helens Town Centre Campus map.
	Beauty & Hairdressing	Students should access the building via the Hair & Beauty entrance. See point 7 on St Helens Town Centre Campus map.
	Business	Students should access the SmithKline Beecham Building (SKB) entrance. See point 6 on St Helens Town Centre Campus map.
	Catering and Hospitality	Students should access the building via the entrance next to The Atrium. See point 2 on St Helens Town Centre Campus map.

	Childcare and Early Years	Students should access the building via the main entrance. See point 1 on St Helens Town Centre Campus map.
	Computing	Students should access the building via the main entrance. See point 1 on St Helens Town Centre Campus map.
	Foundation Academy	Students should access the building via the entrance next to The Atrium. See point 2 on St Helens Town Centre Campus map.
	Floristry and Horticulture	Students should access the building via the main entrance. See point 1 on St Helens Town Centre Campus map.
	Music	Students should access the building via the main entrance. See point 1 on St Helens Town Centre Campus map.
	Science	Students should access the building via the main entrance. See point 1 on St Helens Town Centre Campus map.
	Sport	Students should access the building via the Hair & Beauty entrance. See point 7 on St Helens Town Centre Campus map.
	Performing Arts	Students should access the building via the main entrance. See point 1 on St Helens Town Centre Campus map.
	Public and Uniformed Services	Students should access the building via the Hair & Beauty entrance. See point 7 on St Helens Town Centre Campus map.
	Travel & Tourism, Aviation and Cabin Crew	Students should access the building via the entrance next to The Atrium. See point 2 on St Helens Town Centre Campus map.
STEM Centre Campus Pocket Nook Street, St Helens WA9 1TT	Construction	Students should enter the campus via the main entrance. See point 1 on STEM Centre Campus map.

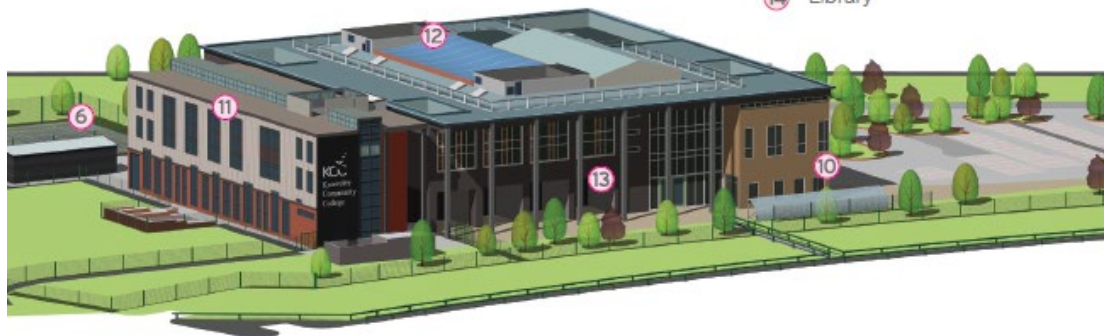
	Engineering	Students should enter the campus via the entrance next to the library. See point 5 on STEM Centre Campus map.
	Animal Management	Students should enter the campus via the animal unit entrance. See point 10 on STEM Centre Campus map.
	Motor Vehicle	Students should enter the campus via the entrance next to the library. See point 5 on STEM Centre Campus map.

See next page for Campus Maps

Knowsley Main Campus Map



- ① Main Reception
- ② Waterpark Drive Entrance
- ③ Stockbridge Lane Entrance
- ④ 3G All Weather Sports Pitch
- ⑤ Athletics Track and Field
- ⑥ Tennis Courts
- ⑦ Sports Hall
- ⑧ Gym
- ⑨ Winter Garden
- ⑩ Learner Services
- ⑪ Kemble Building
- ⑫ Starbucks
- ⑬ Food Court
- ⑭ Library

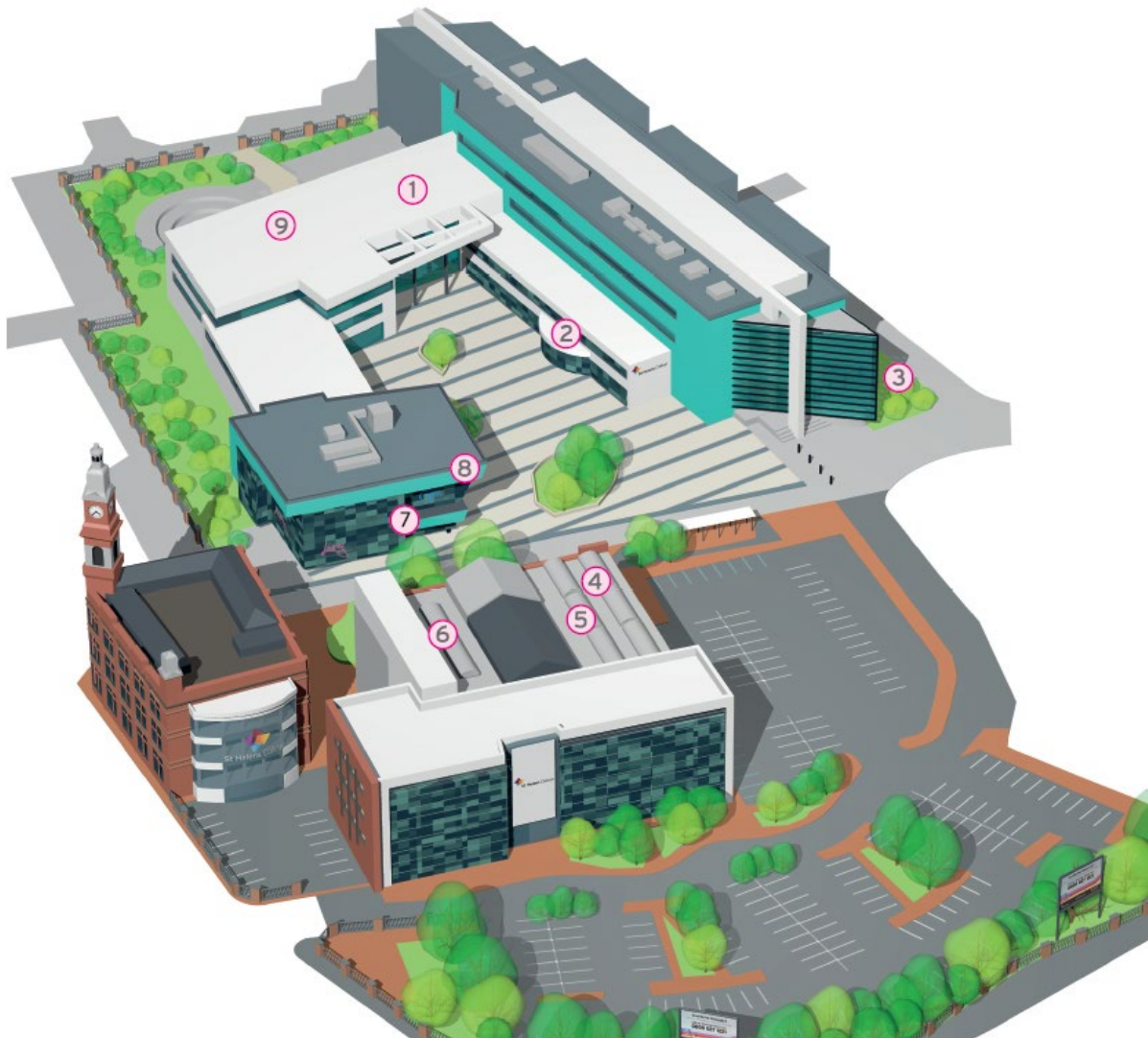


IAMTech Campus Map

- ① Main Entrance
- ② Electrical Installation Workshop
- ③ Mechanical Engineering Workshops
- ④ Construction Workshops
- ⑤ Fabrication and Welding Workshops
- ⑥ Main Car Park

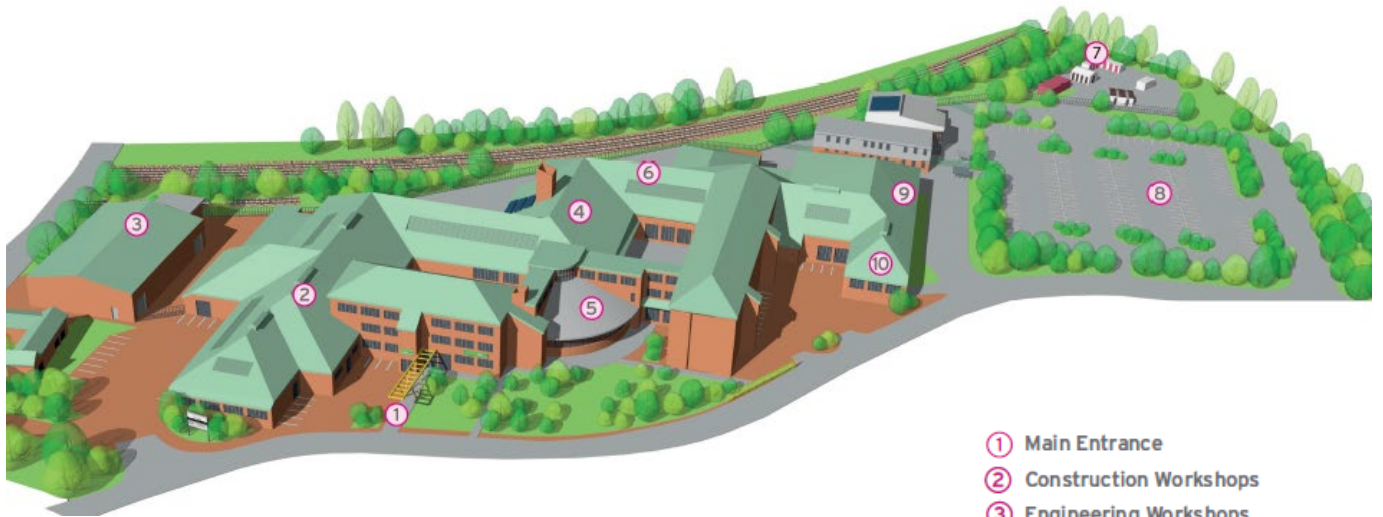


St Helens Town Centre Campus Map



- ① Main Reception
- ② The Atrium
- ③ Colours Restaurant
- ④ Starbucks
- ⑤ Town Centre Library
- ⑥ SmithKline Beecham Building (SKB)
- ⑦ The Lounge (Water Street Entrance)
- ⑧ The Gym
- ⑨ The Flower Studio

STEM Centre Campus Map



- ① Main Entrance
- ② Construction Workshops
- ③ Engineering Workshops
- ④ WA9 Food Court
- ⑤ Library
- ⑥ Automotive Hub
- ⑦ Outdoor Animal Unit
- ⑧ Main Car Park
- ⑨ The Dog Studio
- ⑩ Indoor Animal Unit